

# Mauna Pro

Add-on emergency 

CCT switching 

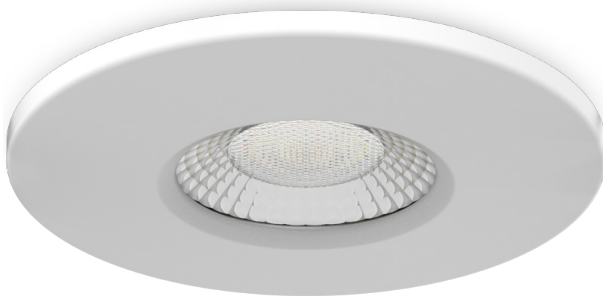
Magnetic bezel 

Modular design 

7W Dimmable fire rated downlight with interchangeable bezel

- Independent driver and a junction box for fast connection
- CCT Switchable (3000K/4000K/Dim To Warm 3000K-2000K)
  - IP65, Class II
  - Dimmable
- Can be installed under insulation

▼ White bezel included



### Interchangeable bezels



Order Code	Power	Beam Angle	Cut-out	CCT	Lumen
KFDL07DIM/SCT	7W	60°	70mm	Switchable*	<b>480lm</b> (3000K) <b>550lm</b> (4000K)

\* When CCT switchable, colour temperature switches between 3000K, 4000K & Dim to Warm 3000K-2000K

### Interchangeable bezels

Order Code KPT-06DFBZ-BAS KPT-06DFBZ-BLK KPT-06DFBZ-WHT KPT-06DFBZ-CHM KPT-06DFBZ-SCH

Order Code KPT-06DFBZ-SBAS KPT-06DFBZ-SBLK KPT-06DFBZ-SWHT KPT-06DFBZ-SCHM KPT-06DFBZ-SSCH

### Optional Gear

Type	Order Code	Description
Emergency module	CEL03LIC/N	Three hour rated Li-ion emergency module

### RF wireless triac dimmer

Order Code	Max Power	Output Current
CYDIMRFT1	2 x 120W (100 Vac) 2 x 288W (240 Vac)	2 x 1.2 A

\* See datasheet for recommended number of lamps per dimmer

**Patent**

- 5** 5 Years Standard Warranty
- 7** 7 Years Extended Warranty
- 500V** Surge Protection
- Mains Dimmable** Dimmable
- 70mm** Cut-out



CCT switch accessible at the front of the fitting, under the magnetic bezel.

### General Specification

Voltage	220-240Vac 50-60Hz
CRI	>80
Life Time	30,000h
Power Factor	0.94
Ambient Temp	-30°C to 40°C
Housing	Zinc coated sheet steel



### Order Code

KFDL07DIM/SCT-WHT  
KPT-06DFBZ-BAS  
KPT-06DFBZ-BLK  
KPT-06DFBZ-WHT  
KPT-06DFBZ-CHM  
KPT-06DFBZ-SCH  
KPT-06DFBZ-SBAS  
KPT-06DFBZ-SBLK  
KPT-06DFBZ-SWHT  
KPT-06DFBZ-SCHM  
KPT-06DFBZ-SSCH

### Dimensions

